

8465 AUTOMATIC, 8455/8465 WITH TRACTOR HYDRAULICS, 8460 ROUND BALER

Table of Contents

DIVISION / SECTION	SECTION NO.	FORM NO.
1 GENERAL		
Index		Rac 7-64980
Introduction	1001	Rac 7-64990
Safety Precautions, Machine Specifications, and Standard Torque Specifications	1002	Rac 7-65000
Servicing	1003	Rac 7-65011
Decals	1004	Rac 7-65020
2 DRIVE SYSTEM		
Index		Rac 7-65030
Drive System - 8465 Automatic Baler	2001	Rac 7-65040
Drive System - 8455/8465 Baler with Tractor Hydraulics	2010	Rac 7-65050
Drive System - 8460 Baler	2020	Rac 7-65060
3 PICKUP		
Index		Rac 7-65070
Pickup	3001	Rac 7-65080
4 ELECTRICAL SYSTEM		
Index		Rac 7-65090
Electrical Systems - 8465 Automatic Baler	4001	Rac 7-65100
Electrical Systems - 8455/8465 Baler with Tractor Hydraulics	4010	Rac 7-65110
Electrical Systems - 8460 Baler	4020	Rac 7-65120
5 TAILGATE AND EJECTOR		
Index		Rac 7-65130
Tailgate and Ejector	5001	Rac 7-65140
6 BALE WRAPPER		
Index		Rac 7-65150
Bale Wrapper - 8465 Automatic Baler	6001	Rac 7-65160
Bale Wrapper - 8455/8465 Baler with Tractor Hydraulics	6010	Rac 7-65170
Bale Wrapper - 8460 Baler	6020	Rac 7-65180



DIVISION / SECTION

SECTION NO.

FORM NO.

7 MAINFRAME, BALE TENSION, AND WHEELS

Index Rac 7-65190
Mainframe, Bale Tension, and Wheels 7001 Rac 7-65200

8 HYDRAULIC SYSTEM

Index Rac 7-65211

Hydraulic Components - 8465 Automatic Baler 8001 Rac 7-65220

Hydraulic System Troubleshooting - 8465 Automatic Baler 8002 Rac 7-65230

Hydraulic System Operation, Description, and Control

Valves - 8455/8465 Baler with Tractor Hydraulics

8455 - S/N CFH0080001 Thru CFH0080405

8465 - S/N CFH0074001 Thru CFH0074875..... 8010 Rac 7-65241

Hydraulic System Troubleshooting - 8455/8465 Baler
with Tractor Hydraulics

8455 - S/N CFH0080001 Thru CFH0080405

8465 - S/N CFH0074001 Thru CFH0074875..... 8011 Rac 7-65251

Hydraulic System Operation, Description, and Control

Valves - 8455/8465 Baler with Tractor Hydraulics

8455 - S/N CFH0080406 and Later

8465 - S/N CFH0074876 and Later 8012 Rac 7-81510

Hydraulic System Troubleshooting - 8455/8465 Baler
with Tractor Hydraulics

8455 - S/N CFH0080406 and Later

8465 - S/N CFH0074876 and Later 8013 Rac 7-81520

Hydraulic System - 8460 Baler 8020 Rac 7-65260

DIVISION 1

SECTION INDEX

1

SECTION TITLE	SECTION NUMBER
Introduction	1001
Safety Precautions, Machine Specifications, and Standard Torque Specifications	1002
Servicing	1003
Decals	1004

Section 1001

INTRODUCTION

TABLE OF CONTENTS

General Information	1001-2
To Our Customer	1001-2
Introduction	1001-2
Serial Number Location	1001-2
Replacement Parts	1001-3
U. S. and Metric Units	1001-3
Table of Contents	1001-3
Page Numbers	1001-3

GENERAL INFORMATION

To Our Customer

We appreciate your confidence in our farm equipment and thank you for your patronage. In preparing this manual, we hope we have furnished you with a valuable tool for operating and maintaining this fine machine. Use this manual as your guide. Practicing the instructions given here will result in many years of dependable service from your machine.

Your Dealer can give you assistance with parts and specially trained personnel to assist you in repair and maintenance. Call your Dealer if you need any assistance or information.

Introduction

This service manual has been prepared with the latest service information available at the time of publication. Read the service manual carefully before doing any service on the baler. This manual is one of the most important tools available to the service technician.

“Right” and “Left” as used throughout this manual is determined by facing in the direction the machine will travel when in use.

The photos, illustrations, and data used in this manual were current at the time of printing, but due to possible production changes, your machine can vary slightly. The Manufacturer reserves the right to redesign and change the machine as necessary without notification.

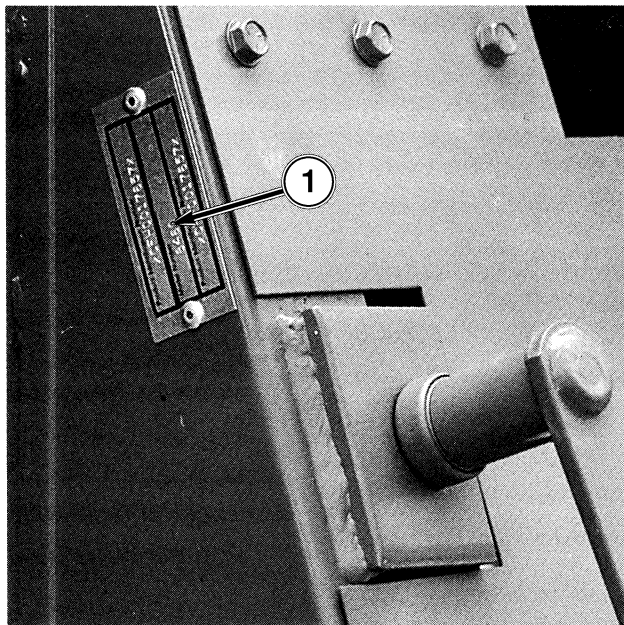


WARNING

Some pictures in this manual show the machine with safety shields removed to allow for a better view of the subject of the picture. The machine must never be operated with any of the safety shields removed.

Serial Number Location

The serial number is important information about the machine. You will need the serial number when ordering some replacement parts. The serial number plate is located at the front of the baler on the left inner panel.



56RB-89076-9

1. Serial Number Plate

Replacement Parts

To obtain prompt, efficient service, always remember to give the dealer the following information:

1. Correct part number description.
2. Model number of the machine.
3. Serial number of the machine.

U.S. and Metric Units

Measurements are given in U.S. units followed by their equivalent in metric units. Hardware sizes are given in inches for U.S. hardware and millimeters for metric hardware.

Table of Contents

A Table of Contents is in the front of this manual. The Table of Contents shows the divisions and the sections that are in each division. The individual divisions and sections also have a Table of Contents.

Page Numbers

All page numbers are made of two numbers separated by a dash, such as 4002-9. The number before the dash is the section number. The number following the dash is the page number in that section. Page numbers will be at the upper right or left of each page.

Section 1002

SAFETY PRECAUTIONS, MACHINE SPECIFICATIONS, AND STANDARD TORQUE SPECIFICATIONS

TABLE OF CONTENTS

8465 Automatic Round Baler	1002-2
Safety Precautions	1002-2
Machine Specifications	1002-5
8455/8465 Round Baler with	
Tractor Hydraulics	1002-6
Safety Precautions	1002-6
Machine Specifications	1002-9
8460 Round Baler	1002-12
Safety Precautions	1002-12
Machine Specifications	1002-15
Standard Torque Specifications	1002-16
U.S. Standard Hardware	1002-16
Metric Hardware	1002-17

8465 AUTOMATIC ROUND BALER

Safety Precautions

Understand that your safety and the safety of other persons is measured by how you service and operate this machine. Know the positions and operations of all controls before you try to operate this machine. **MAKE SURE YOU CHECK ALL CONTROLS IN A SAFE AREA BEFORE STARTING YOUR WORK.**

READ THIS MANUAL COMPLETELY and make sure you understand the controls. All equipment has a limit. Make sure you understand the speed, brakes, steering, stability, and load characteristics of this machine and your power unit before you start to operate the machine.

The safety information given in this manual does not replace safety codes, insurance needs, state and local laws. Make sure your machine has the correct equipment needed by the local laws and regulations.



THIS SAFETY ALERT SYMBOL INDICATES IMPORTANT SAFETY MESSAGES IN THIS MANUAL. WHEN YOU SEE THIS SYMBOL, CAREFULLY READ THE MESSAGE THAT FOLLOWS AND BE ALERT TO THE POSSIBILITY OF PERSONAL INJURY OR DEATH.

Read and understand all operating instructions and precautions before attempting to operate the machine.

Before doing any maintenance or service work on the machine, you must:

- Park machine on a solid level surface.
- Close the tailgate.
- Disengage the PTO.
- Put the transmission in PARK or apply the tractor parking brake.
- Shut off the baler control console.
- Stop the tractor engine. Remove and take the tractor ignition key with you.
- Put the tailgate lockout switch in the LOCKED position.
- **Look and Listen!** Make sure all moving parts are stopped.

Always disengage the PTO, have the baler control console power switch in the OFF position, and shut off the engine before:

1. leaving tractor seat
2. lubricating
3. cleaning the machine
4. adjusting the machine.

When parking the machine, always remove and take the tractor ignition key with you.

Make sure the slotted nut and cotter pin are installed on the bottom of the hitch pin. Make sure the klik pin is installed in the top of the hitch pin when the baler is connected to the tractor.

Always install the safety chain between the baler and the tractor drawbar.

Do not service or adjust the machine until all moving parts of the baler have come to a complete stop.

When working on the machine with the tailgate open, always have the tractor PTO disengaged, the baler control console power switch in the OFF position, and the tractor engine shut off. Put the tailgate lockout switch in the LOCKED position.

Always unload the bale from the bale chamber before raising or working under the machine.

After lubricating, servicing, or adjusting the machine, make sure all tools and equipment have been removed.

Never check belts or chains while tractor is running.

All safety shields and guards must be in place before operating the machine.

Always remain seated when operating the machine.

Entanglement in a rotating drive line can cause serious injury or death. Do not operate the machine with the drive line shields removed.

Never start the tractor with the PTO engaged or the baler control console power switch in the ON position.

Always operate the baler with the baler control console power switch in the ON position.

Be aware of the size of the baler when maneuvering the baler. Make sure there is sufficient space available for safe operation.