

Product: INDUSTRIAL ENGINE
Model: C18 INDUSTRIAL ENGINE N8F
Configuration: C18 Industrial Engine N8F00001-UP

Disassembly and Assembly CX38-P892 Petroleum Transmission

Media Number -M0086381-00

Publication Date -01/10/2018

Date Updated -23/10/2018

i07566677

Pump Drive - Disassemble - Integral

SMCS - 3108-015

Disassembly Procedure

Table 1

Required Tools			
Tool	Part Number	Part Description	Qty
A	421-5662	Eyebolt Lifting Assembly	4
B	1P-2420	Transmission Repair Stand	1
C	1U-9895	Cross Block	1
	123-4370	Puller Stud (M20 x 2.5)	1
	FT-1408	Spacer	2
	6V-7742	Nut	1
D	439-3939	Link Bracket Assembly	1
E	154-6181	Forcing Bolt	2
F	8B-7551	Bearing Puller Gp	1

Start By:

- a. Remove the pump drive. Refer to Disassembly and Assembly, "Pump Drive - Remove".
-



Illustration 1

g06243397

1. With torque converter housing (3) placed on suitable cribbing, attach Tooling (A) to torque converter housing (3). The weight of torque converter housing (3) is approximately 104 kg (230 lb).
2. Support bearing cage assembly (2) with suitable cribbing, allowing access to bolts (1). Remove bolts (1). Use a suitable lifting device to remove torque converter housing (3) and place on Tooling (B).

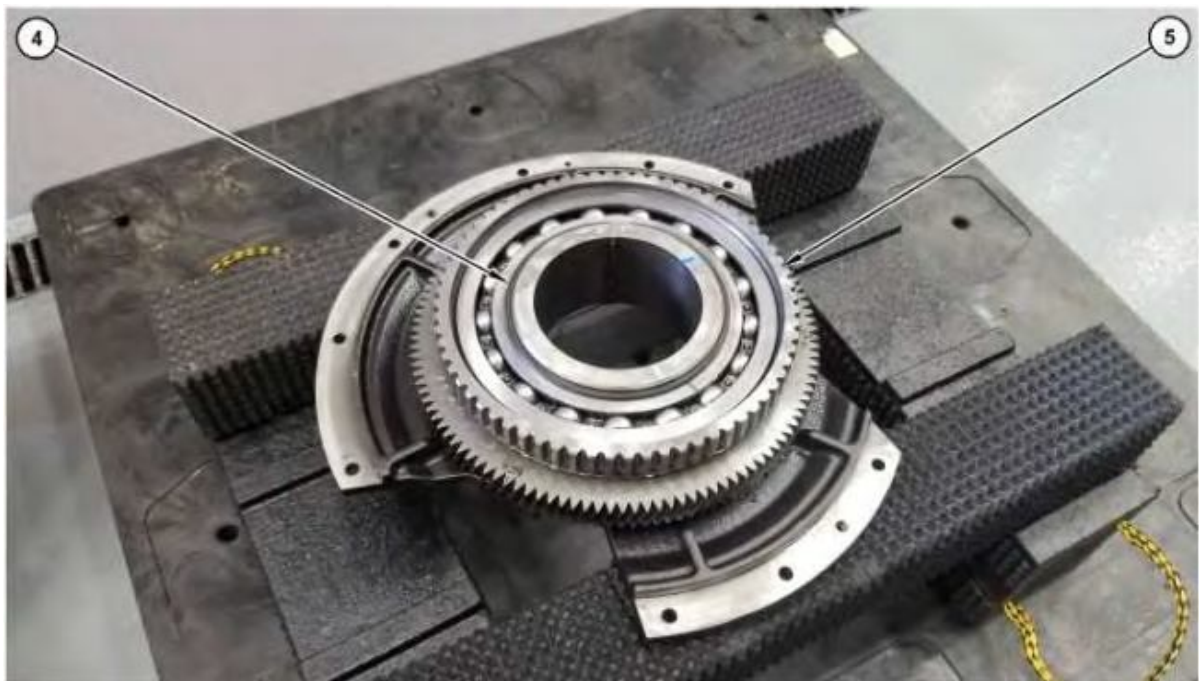


Illustration 2

g06243494

3. Remove retaining ring (4). Remove gear assembly (5).

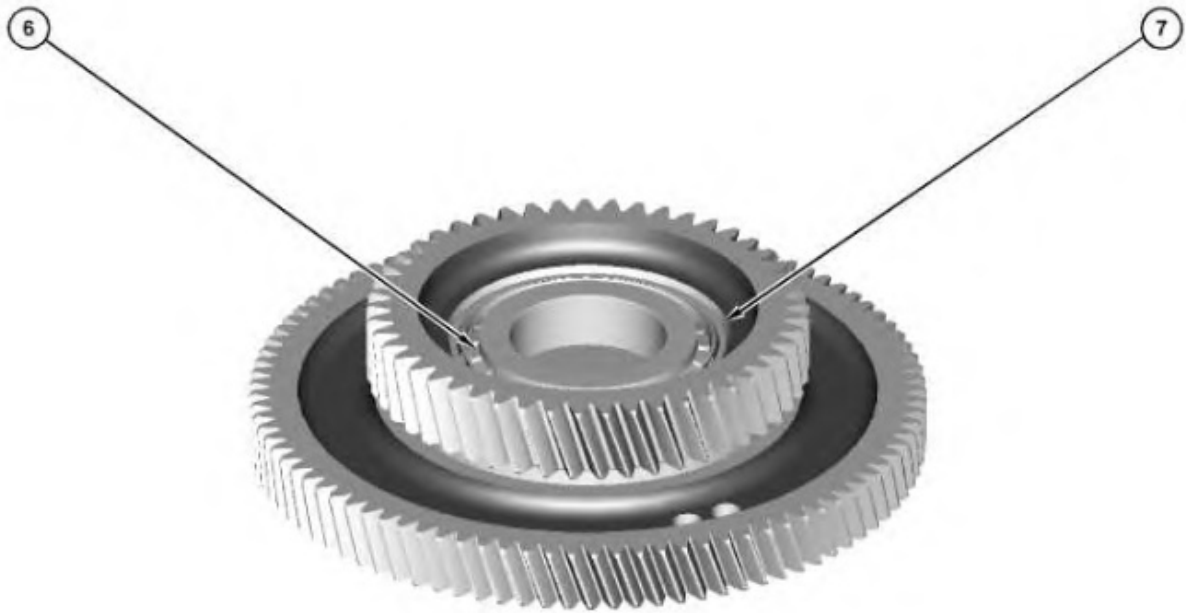


Illustration 3

g06244466

4. Remove bearing cone (6) and bearing cup (7). Repeat this step for the opposite side.
-

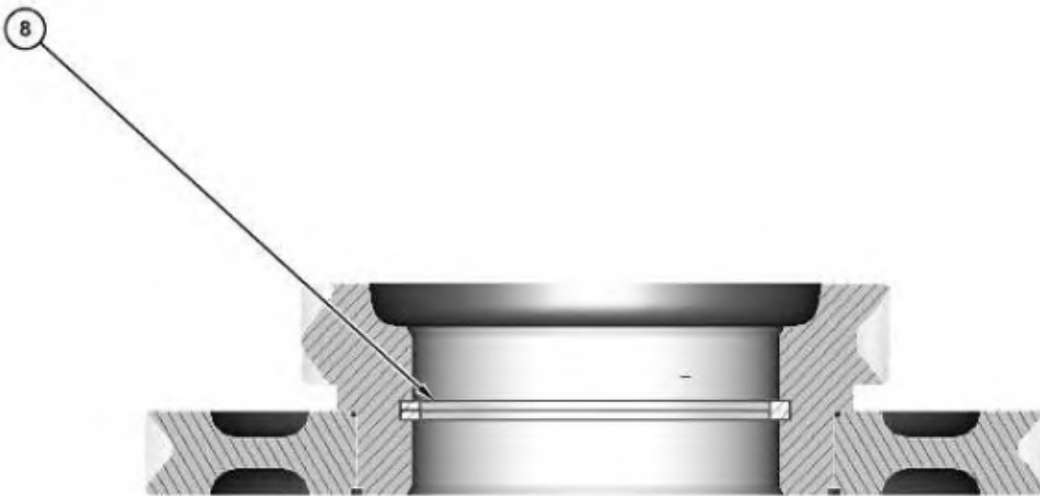


Illustration 4

g06244467

5. Remove retaining rings (8).
-

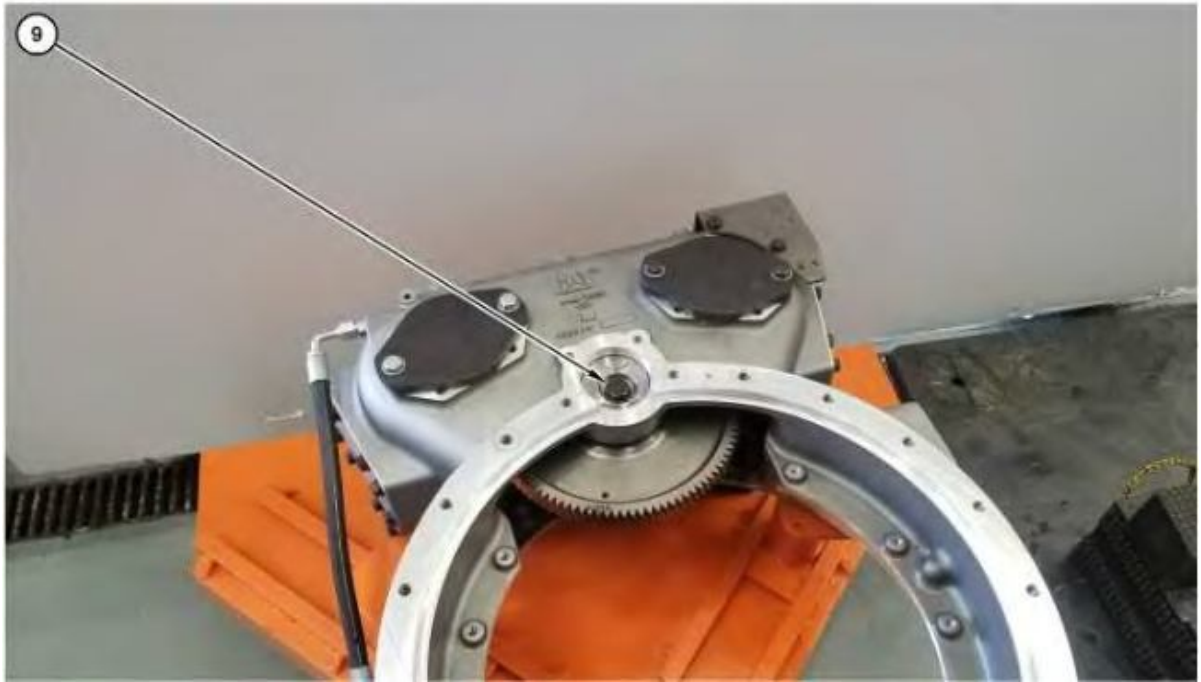


Illustration 5

g06243500

6. Remove bolt (9).

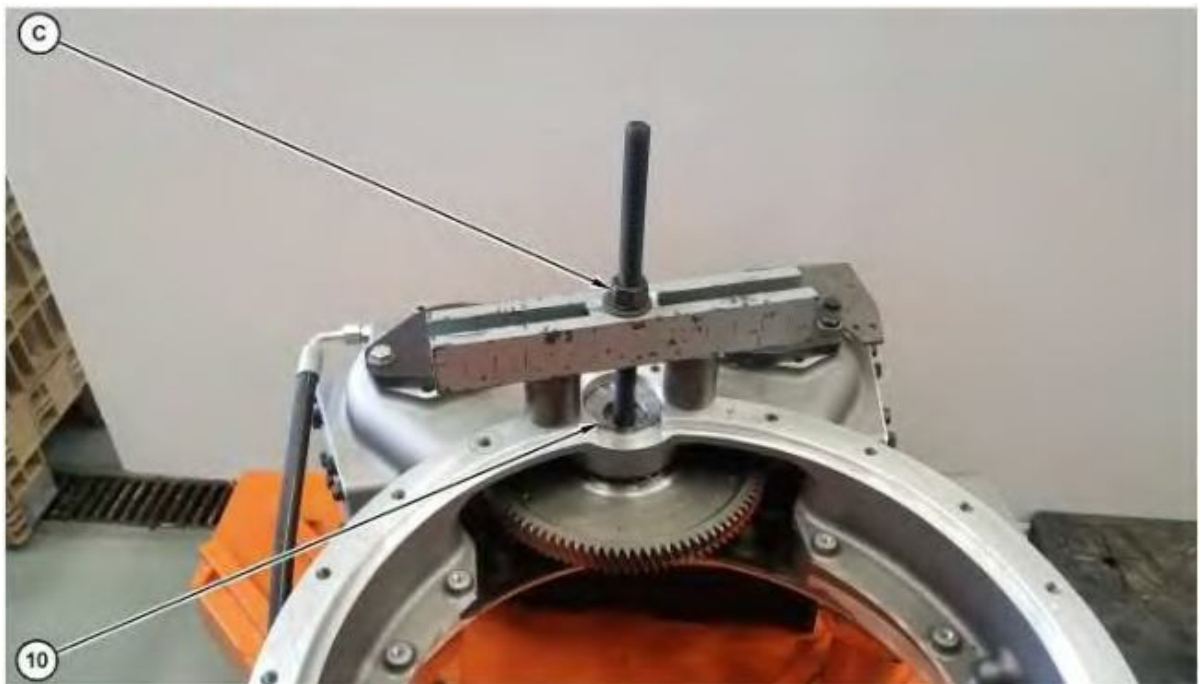


Illustration 6

g06243774

7. Attach Tooling (C) to idler shaft (10). Remove idler shaft (10).



Illustration 7

g06243781

8. Remove idler gear assembly (11) and bearing assembly (12).



Illustration 8

g06243791

9. Attach tooling (D) to torque converter housing (3). Use a suitable lifting device to reposition torque converter housing (3) 180 degrees on Tooling (B). The weight of torque converter housing (3) is approximately 91 kg (200 lb).

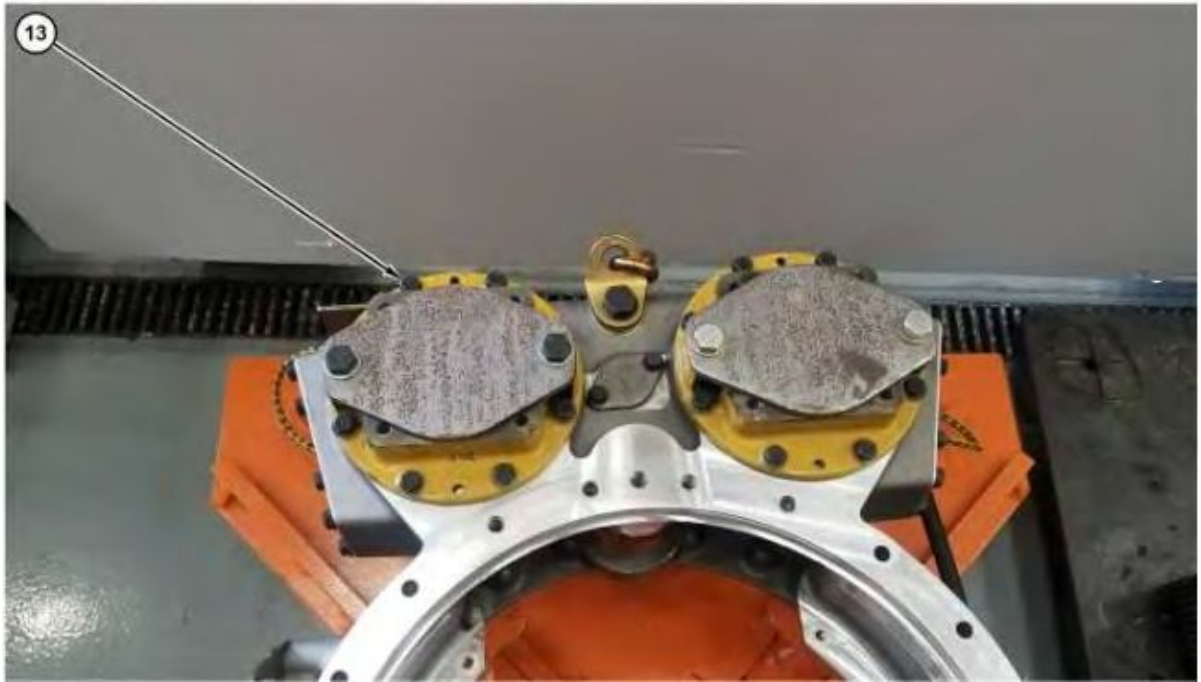


Illustration 9

g06243810

10. Remove bolts (13).

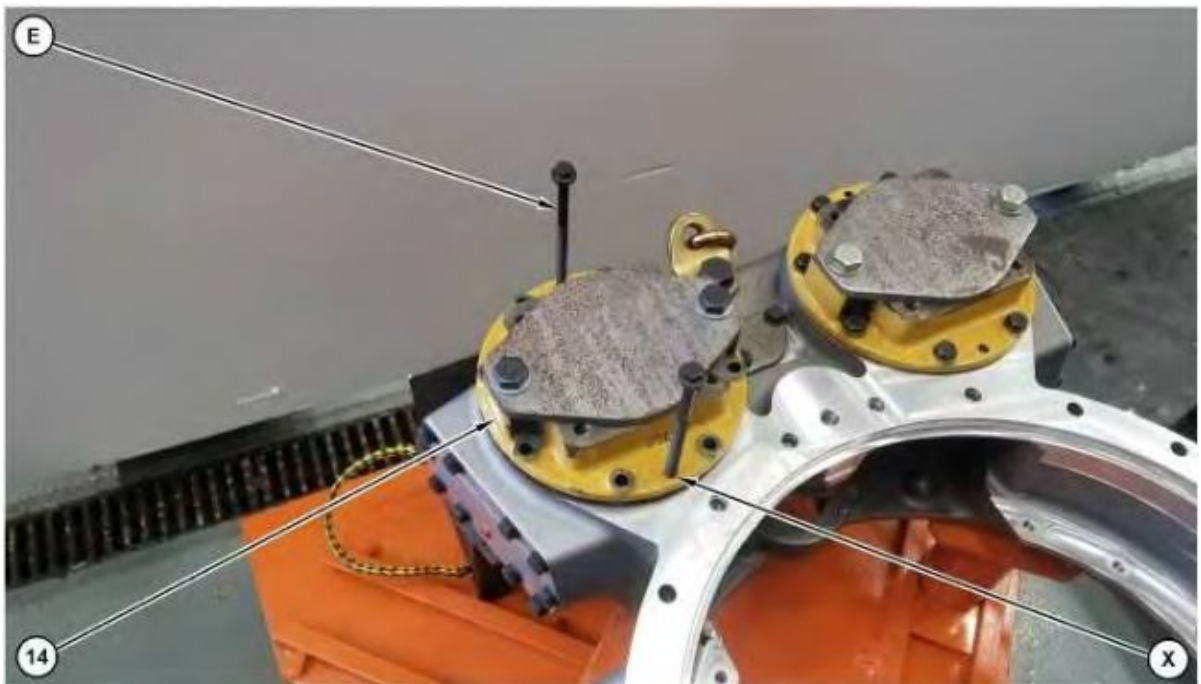


Illustration 10

g06243817

11. Attach Tooling (E) to location (X). Remove pump adapter (14) and remove the shims.

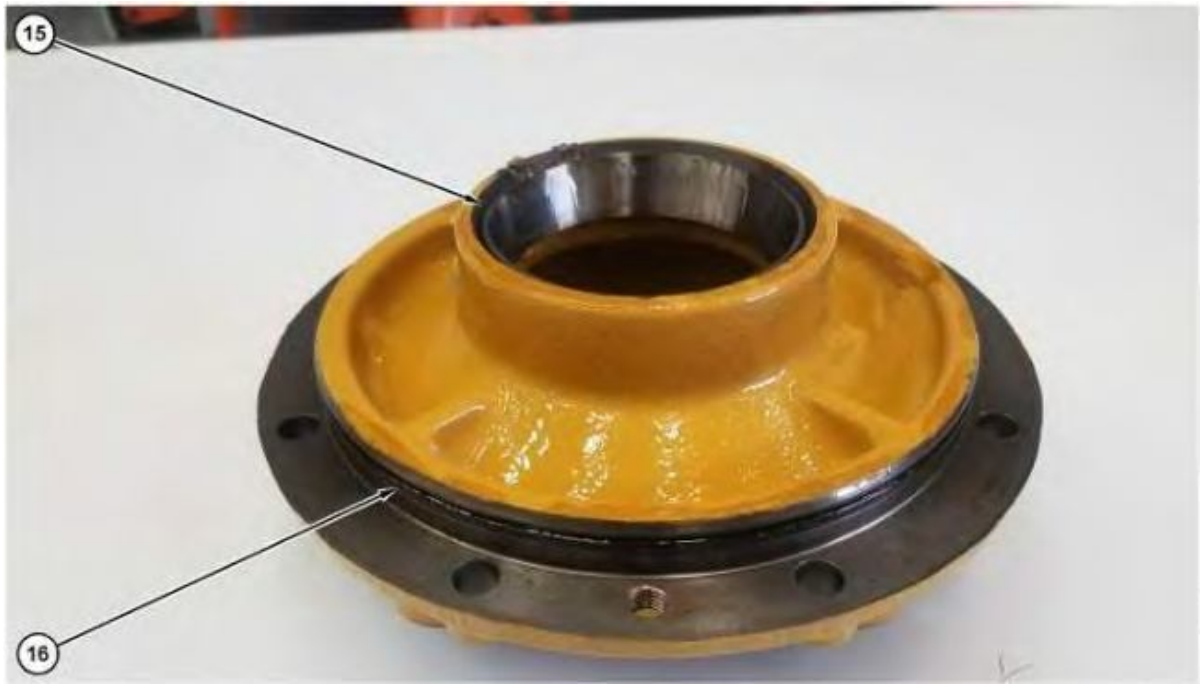


Illustration 11

g06244061

12. Remove bearing race (15). Remove O-ring seal (16).
-

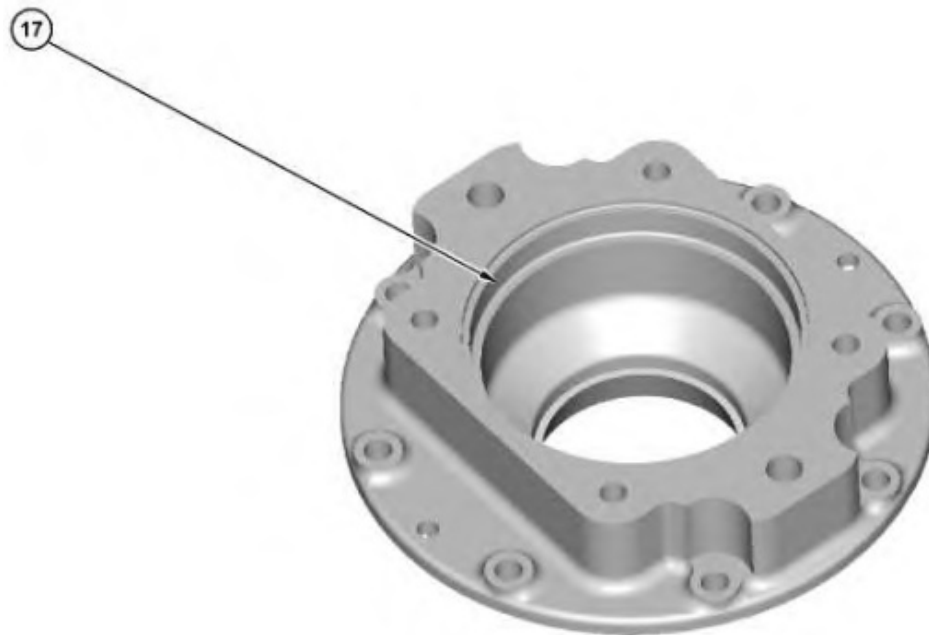


Illustration 12

g06244481

13. Remove bearing cup (17).
-



Illustration 13

g06244206

14. Remove bolt (18).
15. Remove speed sensor (19) and the O-ring seal.

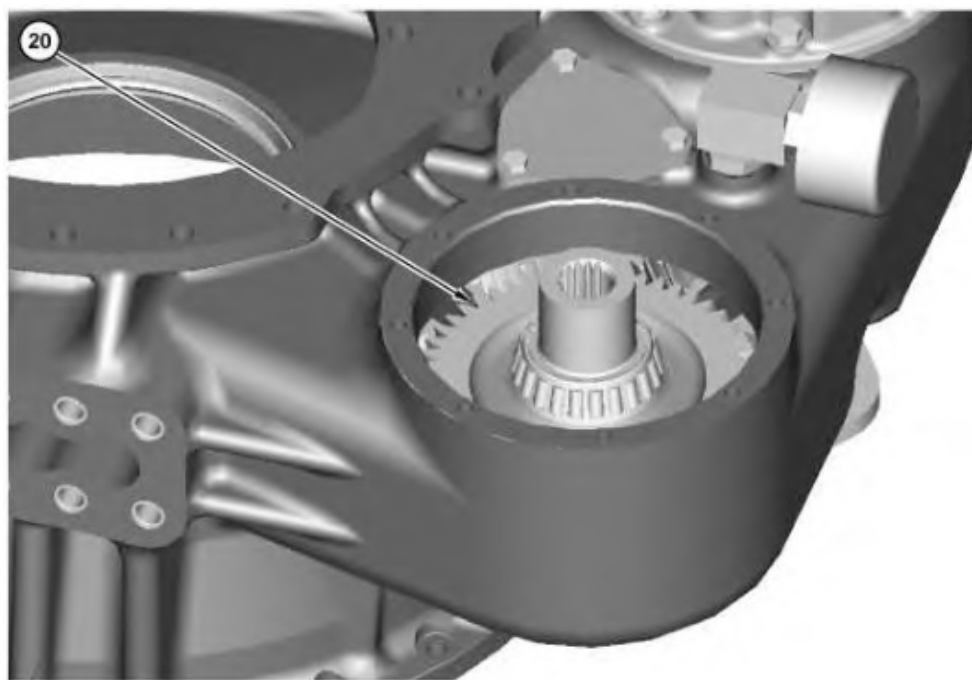


Illustration 14

g06244435

16. Remove pump drive gear (20).



Download the full PDF manual instantly.

Our customer service e-mail:

aservicemanualpdf@yahoo.com